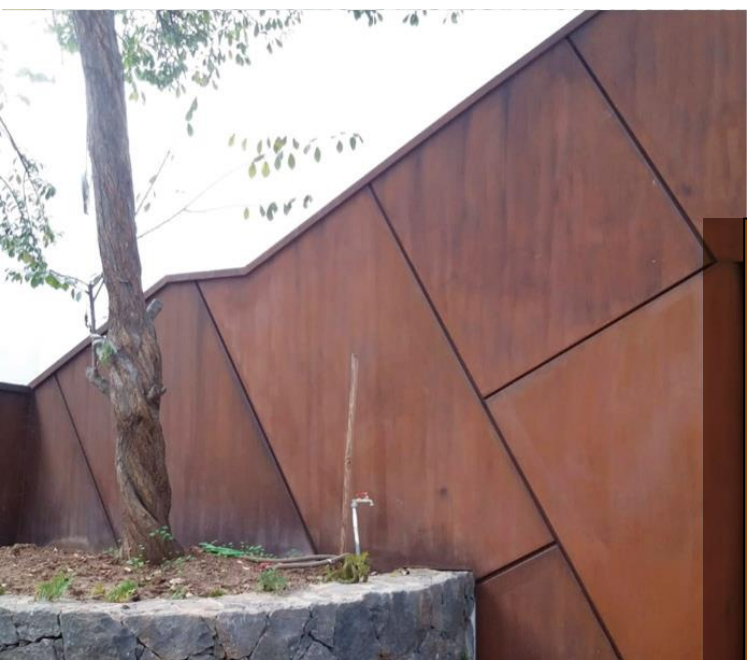


# METALCORTEN®

MANUFACTURE AND DISTRIBUTION OF SHEET - PROFILES - CORTEN STEEL TUBE  
GLOBAL SPECIALISTS IN SKIDDABLE STEELS  
CORTENSTEELMANUFACTURING-FABRICATIONOF CORTEN STEEL



## CHARACTERISTICS

- ✓ Corrosion rate much slower than normal steel
- ✓ Protects the base steel and does not lose mechanical properties
- ✓ Skid resistant similar to copper atmospheric ageing steel
- ✓ Special alloying agents  
(copper) – (nickel) – (chromium) – (phosphorus)
- ✓ Available **COR-TEN®** (original registered trademark usstell)

### WAREHOUSE

Distributors in SPAIN :

Euskadi, Asturias, Galicia, Navarra, Com. Valenciana,  
Balearic Islands, Canary Islands, Andalusia, Catalonia.

EUROPEAN WAREHOUSES:

France, Slovakia, England, Belgium, Portugal .

EXPORT WAREHOUSES :

Morocco, Turkey, Cuba, Mexico

## CORTEN SHEET IN FORMAT

METALCORTEN sheets are manufactured in the best steel mills in Europe from recycled scrap and are produced electro-intensively according to the specifications and chemical composition determined by our R&D team. The reason is to bring out the characteristic orange tone of copper/steel and make it more intense. We offer the original patented COR-TEN® @ USS STEEL grades, as well as INDATEN S355J2WP and HC 315WP grades in thicknesses from 1.5 to 20 mm.

Our stock of commercial formats and coils allows us to supply all possible thicknesses from 1.5 to 20-50-100 mm and, with cut-to-length lines and plasmas, we cover all the requirements our customers need to implement.



Length (mm)	Width (mm)	Thickness (mm)	Finish
2000	1000	1.5/2	COLD-ROLLINGLAF-INDATEN_HC315WP-A-M-O
3000	1500	1.5	COLD-ROLLINGLAF-INDATEN_HC315WP-A-M-O
2500	1250	2/3	COLD-ROLLINGLAF-INDATEN_HC315WP-A-M-O
3000	1500	2/3	COLD-ROLLINGLAF-INDATEN_HC315WP-A-M-O
2000	1000	2/3/4/5/6	BLACKS355J2WP-S355J0WP
3000	1500	2/3/4/5/6/8/10/15/20	BLACKS355J2WP-S355J0WP
6000	1500	8/10/15/20	BLACKS355J2WP
6000	2000	15/20/25	BLACKS355J2W+N

## CORTEN TEAR PLATE



NEW 2024, For works with anti-slip sheets for exteriors, manufactured in coil width 1500 thickness 3/5 giving a step forward in integral and ecological solutions in corten steel. Perfect for steps, stairs, facades with accentuated finish, anti-slip and multifunctional walkways.

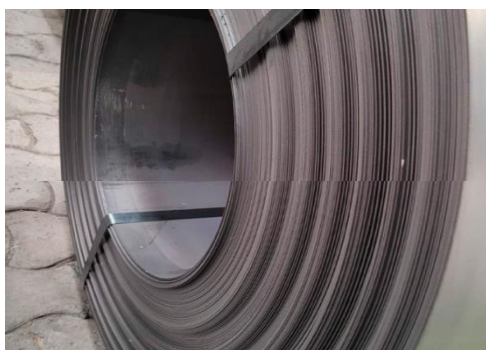
QUALITY S355J2WP -----STOCK IN REEL 1335X3,5/5,5

STOCK IN FORMAT: 2000X1335 AND 3000X1335 ON 3.5/5.5

## CORTEN SHEET IN COIL

We have coils in stock and a continuous program for flattening according to the customer's needs.

The qualities are the same as the formats for 1.5 and 2 mm in HC315WP INDATEN (COLD LAMINATED) and in S355J2WP in black sheet.



QUALITY :INDATENHC315WP  
MEASURES(mm)

QUALITY :BLACKS355J2WP  
MEASURES(mm)

1000x1,5 (INDATEN HC315WP )

1000x2,0/ 2.5/ 3 (BLACK S355J2WP)

1500x1,5 (INDATEN HC315WP)

1500x2,0/2.5/3 (BLACK S355J2WP)

1000x2,0 (INDATEN HC315WP)

1500x4,0/5/6 (BLACK S355J2WP)

1250x2,0 (INDATEN HC315WP)

1500x8,0/10/15/20(BLACK S355J2WP)

1500x2,0/3 (INDATEN HC315WP)

# CORTEN TUBE



Since 2016, we have been manufacturing and developing the Corten Tube, structural product from coil, providing a comprehensive response to the construction process of any building in the same composition as the Corten sheet metal and avoiding the contamination of steel that does not comply with the standard of the sheet metal with which we build those structures. S355J2WP and HC315WP grades (from 2023 = COR-TEN® usstell certified quality).

We currently have monthly schedules of all sizes in stock from 2mm and 3mm (THE THICKNESSES OF THE TUBES ARE THICKNESSES WITH TOLERANCES to  $-0 +0,2$  we always guarantee the NOMINAL thickness or more) and we can manufacture sizes and thicknesses that the customer requests outside the catalogue with a stipulated minimum order.

We have a wide range of Corten tubes (length 6,000 mm) in permanent stock. For any other size, please consult us without obligation. QUALITY: S-355-J2HWP.

Square tube	Rectangular tube	Round tube
20x20x2*	40x20x2*	Ø20x2*
30x30x2*	50x30x2*	Ø30x2*
40x40x2*	60x30x3*	Ø40x2*
40x40x3*	60x40x2*	Ø50x2*
50x50x2*	60x40x3*	Ø60,3x3*
50x50x3*	80x40x2*	Ø89,3x3*
60x60x2*	80x40x3*	Ø100x3*
60x60x3*	100x50x2*	Ø168x3*
80x80x2*	120x60x3*	
80x80x3*	140x80x3C	
100x100x3*		
120x120x3*		
150x150x3*		

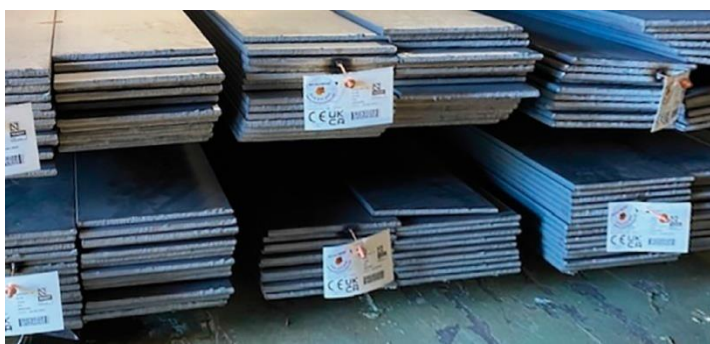
## LAMINATED CORTEN FLAT SHEETS

Hot-rolled corten plate is the answer to our customers' needs for certain production sizes in S355J2W + M quality. In lengths up to 6100 mm in stock for all sizes.

Plasma cut corten plate (S355J2WP) is the answer to the variety of plates which are not of limited production and which are not available in rolled form due to the minimum production quantity.

The cutting starts from 3000×1500 and 6000×1500 plates in stock in various rotational sizes and can be made to measure at the customer's request in any size with our high definition plasma.

LAMINATED CORTEN FLAT SHEETS Quality: S355J2W+M - MEASURES IN STOCK:	CORTEN FLAT SHEETS CUT FROM SHEET METAL S355J2WP MEASURES IN STOCK UP TO 2.980mm x 5.980mm:
40x8at 6.000mm S355J2W+M	40x8S355J2WP
50x10at 6.000mm S355J2W+M	40x10S355J2WP
100x10 at 6.000 mm S355J2W +M	50x8S355J2WP
200x10at 6.000mm S355J2W+M	50x10S355J2WP
150x10 at 6.000 mm S355J2W +M	60x10S355J2WP
60x8S355J2WP	80x8S355J2WP
	80x10S355J2WP
	100x8S355J2WP
	120x8S355J2WP
	120x10S355J2WP



**ASK FOR OTHER SIZES**

Manufacture of any custom-made sheet and flat sheet in cut to size.

## ROUND SMOOTH CORTEN STEEL

(S355J2W+AR)

As an answer to the construction solution for railings, decorations, sculptures and various structures. We are introducing from 2023 onwards a new production of smooth rod in the usual nominal diameters.

Quality: S355J2W+AR MEASURES (mm)

Smooth round of 12 at 6000mm.

Smooth round of 16 at 6000mm.

Smooth round of 20 at 6000mm.



## ANGLES (PROFILES S355J2W+M)



Commercially available angles in stock for conventional civil and industrial structures as a response to the different types of shapes that complete the range of constructive and durable Corten steel.

MEASURES IN STOCK

30x30x3 of 6, 1 mtrs.

40x40x4 of 6, 1 mtrs.

50x50x5 of 6, 1 mtrs.

100x100x10 of 6, 1 mtrs.

## CORTEN PERFORATED PLATE



NEW 2024

Perforated sheet with square hole to create your corten steel fences.

QUALITY HC315WP C/L

SIZE: 2000X1000X1.5 MM

SQUARE HOLE:

T20 C20

T30 C30

T40 C40

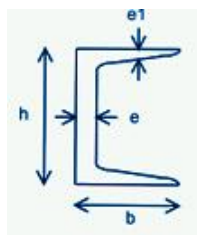
## CORTEN STEEL BEAMS

PRODUCTION OCTOBER 2024

Due to the increase in demand for Corten steel profiles, this year we have added UPN in CORTEN STEEL to our catalogue, with different sizes.

In this way we strengthen our commitment to Corten steel, in all construction processes, and we continue to develop projects for future adhesions.

QUALITY S355J2W+AR



In 6 and 12 metre lengths, in 3 sizes of U:

UPN 80

UPN 100

UPN 120



## CORTEN ELECTRODES



The special electrode for corten is a moisture-resistant, LMA-coated electrode, alloyed with Ni and Cu, which provides a metal with good resistance to corrosion by seawater and flue gas. It is suitable for welding weather resistant steels (CORTEN) and for shipbuilding. This electrode can be used for all types of joints and welding positions.

## RUST ACTIVATOR METALCORTEN



### CHARACTERISTICS :

An oxidizing solution of water-soluble mineral salts accelerates the rusting process on ferrous surfaces such as corten steel.

### SURFACE PREPARATION:

The surface must be free of scale. Hot-rolled irons, and cast iron must be pickled to remove any scale present on the surface.

If the surface is greasy, it must be degreased.

### APPLICATION :

Leave for 1 hour and repeat application. Although oxidation is instantaneous, it is recommended to leave the product on for at least 3 days.



BEFORE AFTER APPLICATION OF METALCORTEN RUST ACTIVATOR+PROTECTOR

## PROTECTOR METALCORTEN



Effect sealer is a transparent sealer, which protects metals and surfaces from high acidity, prevents further oxidation and prevents color yellowing. It chemically protects and minimizes further oxidation, creating a self-crosslinking barrier to resist weathering.

Does not require dilution with water, it is applied directly on metals. When applied over Effect's iron, copper or bronze paints, dilute in equal parts with mineral water for the 1st coat only. It does not require the subsequent application of any finishing varnish.

Note: Effect Sealer is sensitive to humidity during the drying process.

When working outdoors, do not apply the product if there is a risk of rain during the 3 days following the application.

## CALAMINE GRINDING DISC



Our R&D department has developed special discs whose composition is a mixture of polyamides for the removal of surface calamine on steel. Our discs completely remove the calamine from black carbon steel while preserving 100% of the base steel. In this way, the mechanical characteristics of the corten steel remain intact and with the perfect finish for a uniform oxidation. For the good handling of the professionals, we manufacture them in 125mm diameter so that the weight of the radial does not affect the working time.

Furniture



Museum, civil constructions and sculptures



Doors and gardens.



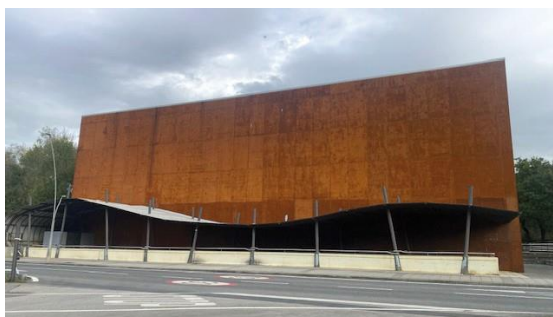
Chalets & Villas



Signboards



Facades



**METALCORTEN®**

Grupo Hierros Etxebarria S.L.

[www.metalcorten.net](http://www.metalcorten.net) · [www.vente-aciercorten.fr](http://www.vente-aciercorten.fr) · [www.metalcorten.uk](http://www.metalcorten.uk)

Poligono Bekea, Naves nº 4, 5, 6, 8, 10 y 11 48960-

GALDAKAO (BIZKAIA) SPAIN

info@metalcorten.net (+34) 944571855 - (+34) 639208034

FRANCE: france@metalcorten.net - (+34) 639208962

ENGLISH: [info@metalcorten.net](mailto:info@metalcorten.net) - (+34) 606259298